

DEER VALLEY MEDICAL CENTER EXPANSION PROJECT

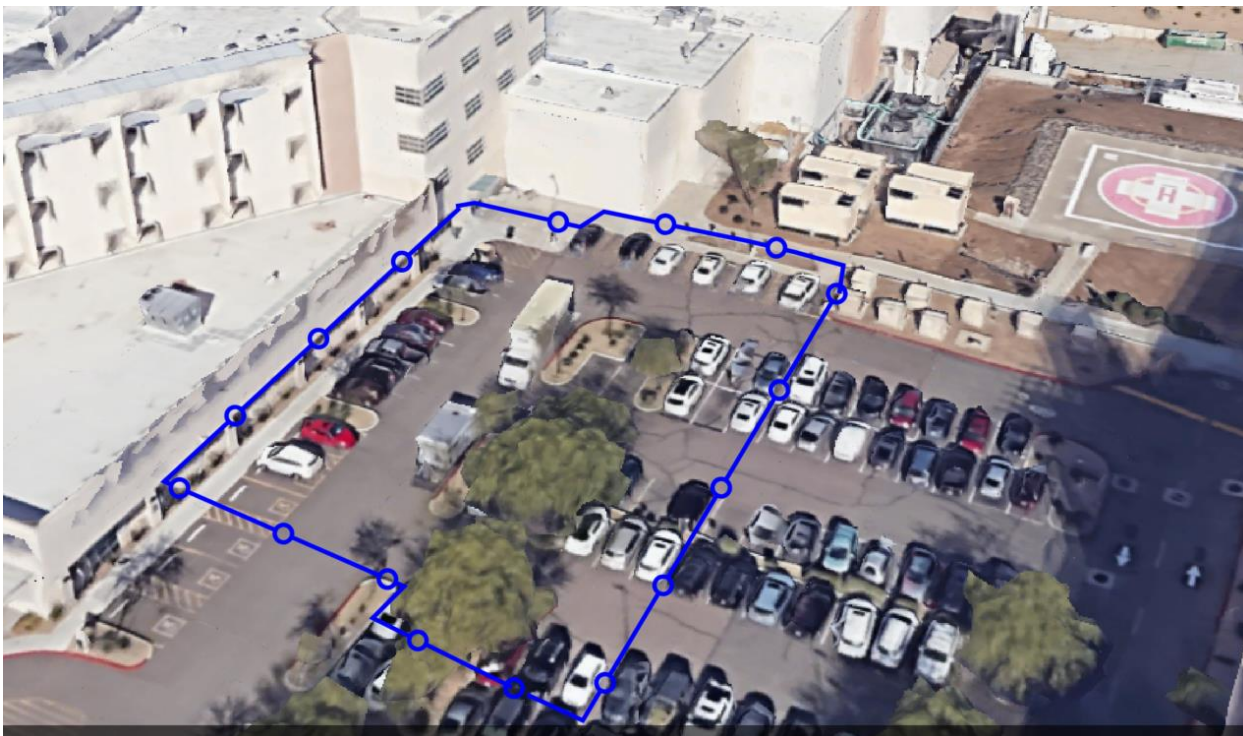
Phase two key dates and campus impact:

Key dates:	Construction work:	Impact to team members:
Wednesday, Oct. 18	Area behind Pavilion Two will be fenced to prepare for the surgery and lab expansion.	Team members and helicopter pad services will still have the same access from the back entrance into the hospital. Observation unit parking will not be impacted at this time.

See image below

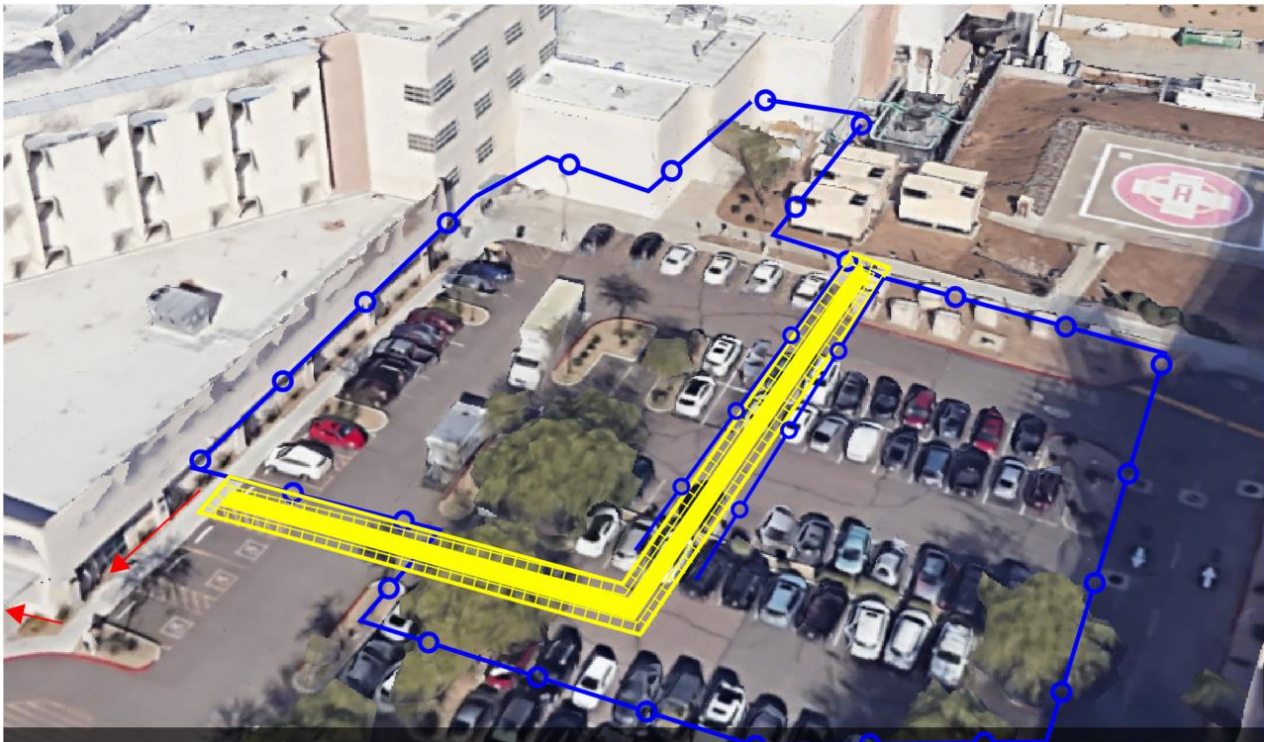
The blue line shows where the fence will be placed on Wednesday, Oct. 18. Three new ADA handicap parking spaces have been added on the first floor of the parking garage to accommodate for the loss of the nine handicap parking spaces.

The employee entrance won't be impacted until Thursday, Jan. 4, when Phase Three of the project begins.



DEER VALLEY MEDICAL CENTER EXPANSION PROJECT

From Thursday, Jan. 4 to Friday, June 7, 2024, construction will impact the employee entrance at the back of Pavilion Two. During this time, all team members who park in the garage and patients from the helipad will be routed to the observation unit entrance (see image below.) More communications will be provided before this change happens.



Get the latest project news

- Stay tuned to Pulse News and check your work email regularly for updates and information about the project.
- You can also visit the Deer Valley Medical Center expansion project page on HonorHub for the latest updates and communications.